



AMT Release 8.3

Release 8.3 further enhances AMT's proactive approach to Equipment Management, providing significant new business, functional and technical enhancements.

More Proactive Equipment Management AMT 8.3 has a raft of features to ensure the equipment management team has the information they need quickly and easily. Information that allows the proactive management of equipment and components leading to increased uptime and reduced costs.

- User configurable Quick Watch screen to monitor the most important Equipment KPI's
- New feature to trend and report important KPI's over time (ie change in PCV)
- Dynamic drill down capability added to maintenance events report
- Parts demand analysis
- Work order accrual to manage payment vs repair timing issues

More Work Order Management 8.3 completes AMT's transition to a full work order system offering quick task feed back capture, work order authorisation and enhanced interfaces to systems that do not have a native work order system

- Feedback form for quick task / work order closure
- Full work order authorisation process (set spending limits by user)
- New interfaces directly into third party purchase order, payroll and inventory systems
- Simpler work order to ERP reconciliation reporting
- Create work orders directly from third party system (ie condition monitoring or scheduling system)

More Time Saving and Productivity Driven Enhancements AMT 8.3 continues our push to reduce administration, simplify data entry and increase your productivity

- Most AMT grids can now be directly copied and pasted into Microsoft Excel™
- Work plans can be exported directly to Microsoft Project™
- Shift log for rapid entry of down time information
- Simplified task input screen layout
- New express backlog creation to rapidly create tasks
- Many new reports – Labour hours per interval, duration per interval, projection & interval analysis and more
- Bulk printing of work orders

Multi-Lingual AMT is now multi-lingual and uses the unicode standard (two byte text) that supports Chinese characters. This capability also enables company specific language (ie work order / task) and regional spelling (ie optimize / optimise)



AMT Quick Watch

ENHANCEMENT

Users can now configure Quick Watch items to continually monitor important KPI's. This is all part of iSolutions drive to proactively identify areas of equipment management that require attention.

- Highly visible management tool
- Monitor KPI's that are important to you
- Configurable by user
- Drill down to more detail

Quick Watch								
No Recent Usage readings	Overdue Component	First Stoppage	Breakdowns	WIP	Annual Cost Variance	PCV Change	High Cost	Workorder Cost Variance
Drag a column header here to group by that column.								
Site	Equipment	Model	Task	Cost	Labour	Date		
Mine Site A	DOZ01: D10R	D10R	4182.RI.GR.0 TRACK FRAME ROLLER SEAT	88101.11	25.5	31-Mar-2009		
Mine Site A	DOZ01: D10R	D10R	4182.LT.GR.0 TRACK FRAME ROLLER SEAT	87924	11	31-Mar-2009		
Mine Site A	TR09: 793C	793C	1000.00.GR.0 ENGINE	57832	493.7	21-Feb-2009		
Mine Site A	DOZ02: D11R	D11R	4170.00.GR.0 TRACK ASSEMBLY	51694.34	53.7	07-Mar-2009		
Mine Site A	TR01: 793C	793C	7526.00.PM.1000 1000 SVC HOUR MAINTENANCE	50000	4	31-Oct-2008		
Mine Site A	TR14: 793C	793C	6517.00.GR.0 BOWL	47121.78	649.5	03-Aug-2009		
Mine Site A	GR01: 24H	24H	7000.00.CC.0 MACHINE	44890.14	32.5	21-May-2009		
Mine Site A	DOZ02: D11R	D11R	1239.00.RR.0 CYLINDER PACK	42100.08	0	27-Mar-2009		
Mine Site A	TR04: 793C	793C	1000.00.GR.0 ENGINE	38422.08	201.2	03-Aug-2009		
Mine Site A	GR01: 24H	24H	4313.FR.GR.0 STEERING AXLE	34937.16	230.5	21-May-2009		
Mine Site A	DOZ02: D11R	D11R	4170.00.RI.0 TRACK ASSEMBLY	34504.19	156.4	17-Apr-2009		

Shift Log Down Time Capture

ENHANCEMENT

An additional entry screen has been added for quick capture of down time records from a dispatch systems or manual entry. External work orders can be quickly linked using drag and drop functionality.

- Quickly add down time records
- Link to third party dispatch records
- Drag and drop to link work orders
- Real time equipment status updates

Eqp *	Model	E	Description *	S*	Downtime *	Uptime *	Down Hrs	P	B	Event Prevention	DT Resp	Task Type	Comp Code	S*	Cause	S T	Workorder #
+ DT001	MT3700AC	■	500hr ?Service	IP	07-May-2009 12:...	12-May-2009 11:...	118.7	✓	■		Dealer	PM - Servi...	M 40002 - 5...	YTS	Not Appli...		W09-0910
+ DT112	777F	□	500hr ?Service	IP	07-May-2009 12:...	12-May-2009 11:...	118.7	✓	□		Dealer	0 - (NONE)	M 40002 - 5...	YTS	Not Appli...		W054-0910
+ DT013	MT3700AC	□	Labour feedback test	C	09-Apr-2009 14:04	11-May-2009 14:...	768.6	✓	□		Dealer	RS - Resea...	E 50009 - Ai...	C	Not Appli...		W0484-0910

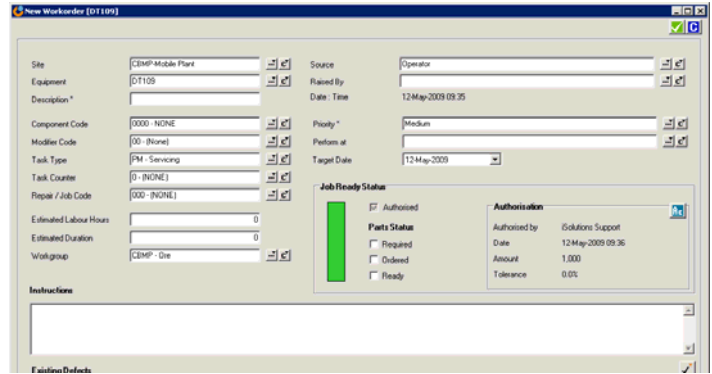
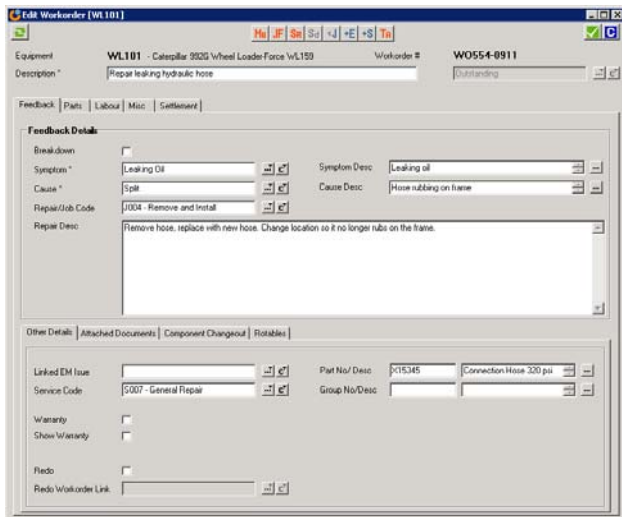


Work Order Enhancements

ENHANCEMENT

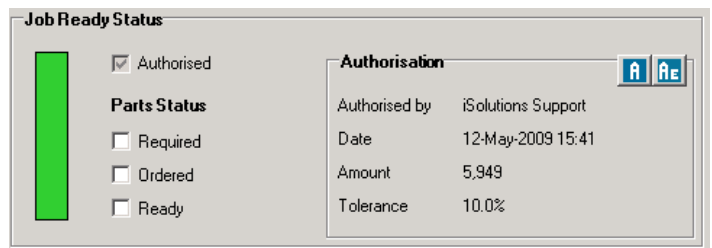
The AMT work order modules has been substantially enhanced and now boasts fully functional work order management

- New quick backlog capture for quickly creating entering defects
- Add documents to work orders from AMT library or third party document system
- New interface to create work order from external system (ie hand held device or condition monitoring alert system)
- Drag and drop parts on work order

- Quick feedback form for close out of work order
- Include technical and failure information as well as repair details
- Record component in/out serial numbers
- Flag warranty and redo work

- Work order authorisation process
- Quickly review and authorise outstanding work
- Each user has a defined authorisation limit



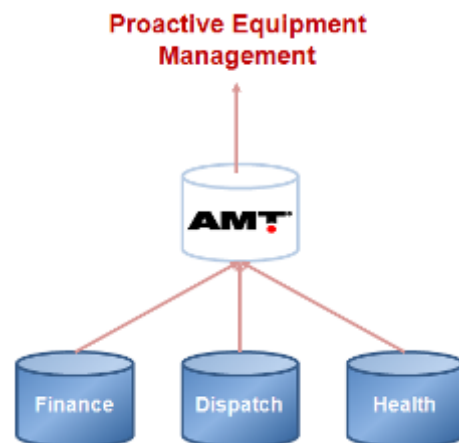


New XML Web Services Interfaces

ENHANCEMENT

Interfaces to third party enterprise and financial systems have been greatly enhanced offering greatly flexibility as well as new options for existing clients

- AMT supports 34 interface points to give great flexibility when linking to third party systems
- All interfaces now support XML web services (legacy csv support is still available)
 - GL Import via web services
 - Parts price export via web service
 - Export all equipment via web service
 - Downtime import via web service
 - Condition monitoring measurements via web service
 - Usage reading via web service
 - Extended import work orders via web service
 - Create purchase orders via web service
- Plant hire invoice import is now included
- XML web service error messages for all web service interfaces
- Interface transaction and error log report for interfaces



New Reports

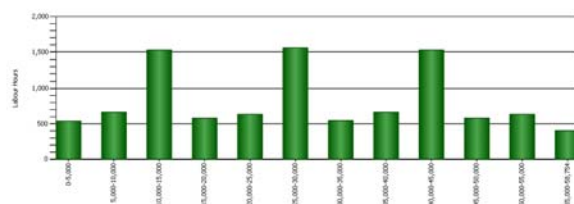
ENHANCEMENT

- PCV trending over time
- PCV analysis on-screen drill down capability
- Cost per hour per Unit of Measure (UOM)
- Labour hours per UOM interval
- Duration hours per UOM interval
- Event analysis on screen drill down capability
- Production statistics chart and report
- Component change out probability analysis
- Parts demand analysis
- Additional MARC financial report
- Consumables forecast report
- Interface log / error list reporting

Labour Hours per Interval



Hierarchy: [Equipment: 01502: 7797][Projection Type: Current]
 Additional Filters: [Cost Center: Plant][Labour Type: All]
 Analyzed By: [Mobile, etc]



Interface Log



Date Range: [11-May-2009-12-May-2009]
 Additional Filters: [File Name: None]

Import Reference	Error Type	Error Description	Line No	Date
invService - ImportOrder 2009-05-12_21_22_14	Business Rules	External_Source_ID: 1009-0: PART - External_Seg_ID: 0: 121456789 - Cost_Sever does not exist in AMT	1	12-May-09
invService - ImportOrder 2009-05-12_21_22_29	Business Rules	External_Source_ID: 1009-0: PART - External_Seg_ID: 0: 121456787 - Cost_Sever does not exist in AMT	1	12-May-09
invService - ImportOrder 2009-05-12_21_22_30	Business Rules	External_Source_ID: 1009-0: PART - External_Seg_ID: 0: end - Currency does not exist in AMT	1	12-May-09



General Enhancements

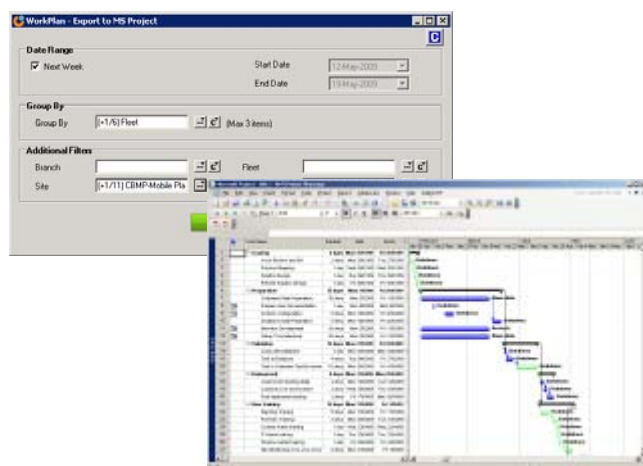
ENHANCEMENT

iSolutions receives feedback from our client base and a significant effort has been made in AMT 8.3 to deliver the features that meet customer's highest priority needs. Many separate general enhancements have been included in AMT 8.3.

- **Multilingual capability**
- Capture and report on production statistics
- Export AMT grids to MS Excel
- Bulk printing of work orders
- Export work plans to MS Project
- Standard job validation

Equipment		Description
02BU501		Building Main Office Reception
02BU502		Building Female Change Room and Toilets
02BU503		Building Male Change Room and Toilets
02BU504		Building Main Office Storage 1 & 2
02BU505	Add	Building First Aid Centre Port
02BU506	Edit	Building Electrical - Mechanical - Store
02BU506-TK01	Delete	Diesel Storage Tank 6000ltr's
02BU507	Copy the table	Building Oil - Grease Storage
02BU508		Building Stores Storage
020W901	Current Projection	Dily Water Treatment 901
020W901-SU901	Budget Projection	020W901-SU901 Sump - Workshop Dily W
020W901-TK907		020W901-TK907 Tank - De-oiled Water
02PCW901		Process Water Infrastructure PCW901

Export to MS Excel



About iSolutions

iSolutions International Pty Ltd (iSolutions) is a leading provider of software, services and training to mining equipment companies. Our software and processes are based upon a dynamic Life Cycle Costing (LCC) methodology which enables Equipment Managers to understand how the decisions they take today effect the long term productivity and cost of their operations.

Formed in 1997 by Graeme Elgie and Robbie Feyder, who remain today as its principal owners, the company has maintained its focus on the niche heavy equipment market that provided the impetus to establish iSolutions. This focus is reflected in our charter and our continued relationship with our Customers.

To learn more about our products and services, please visit iSolutions online at www.isipl.com or alternatively contact Stuart Burckhardt on +61 2 9966 9096 or email: stuart.burckhardt@isipl.com

AMT. The Asset Management System That Does MORE

iSolutions International Pty Ltd

T: +61 2 9966 9096

E: sales@isipl.com

www.isipl.com

